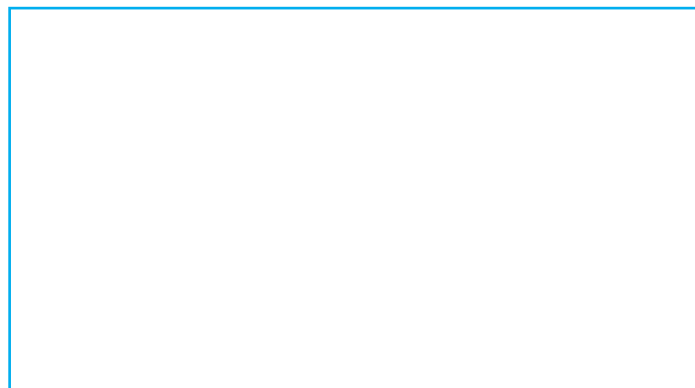


SIGN-CARD-1SD  
("Sign Insert Card" – One-sided print)

SIGN-CARD-2SD  
("Sign Insert Card" – Two-sided print)

20 ml styrene or vinyl  
80 lb. coated cover weight paper

3.625 in.



2 in.

For use with this iSEE Sherpa Product



**SHERPA-SIGN-CLEAR**  
("Sign Holder")

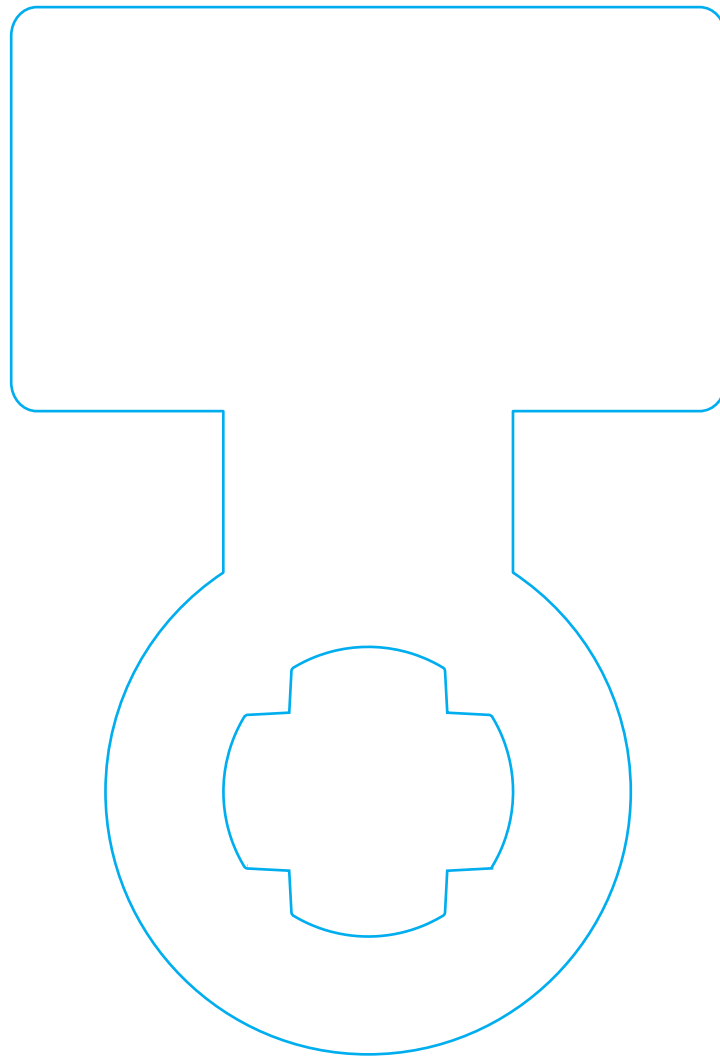
SIGN-FLEXI-SM-1SD  
("Small Flexi Sign" – One-sided print)

SIGN-FLEXI-SM-2SD  
("Small Flexi Sign" – Two-sided print)

20 ml styrene or vinyl

3.75 in.

2.125 in.



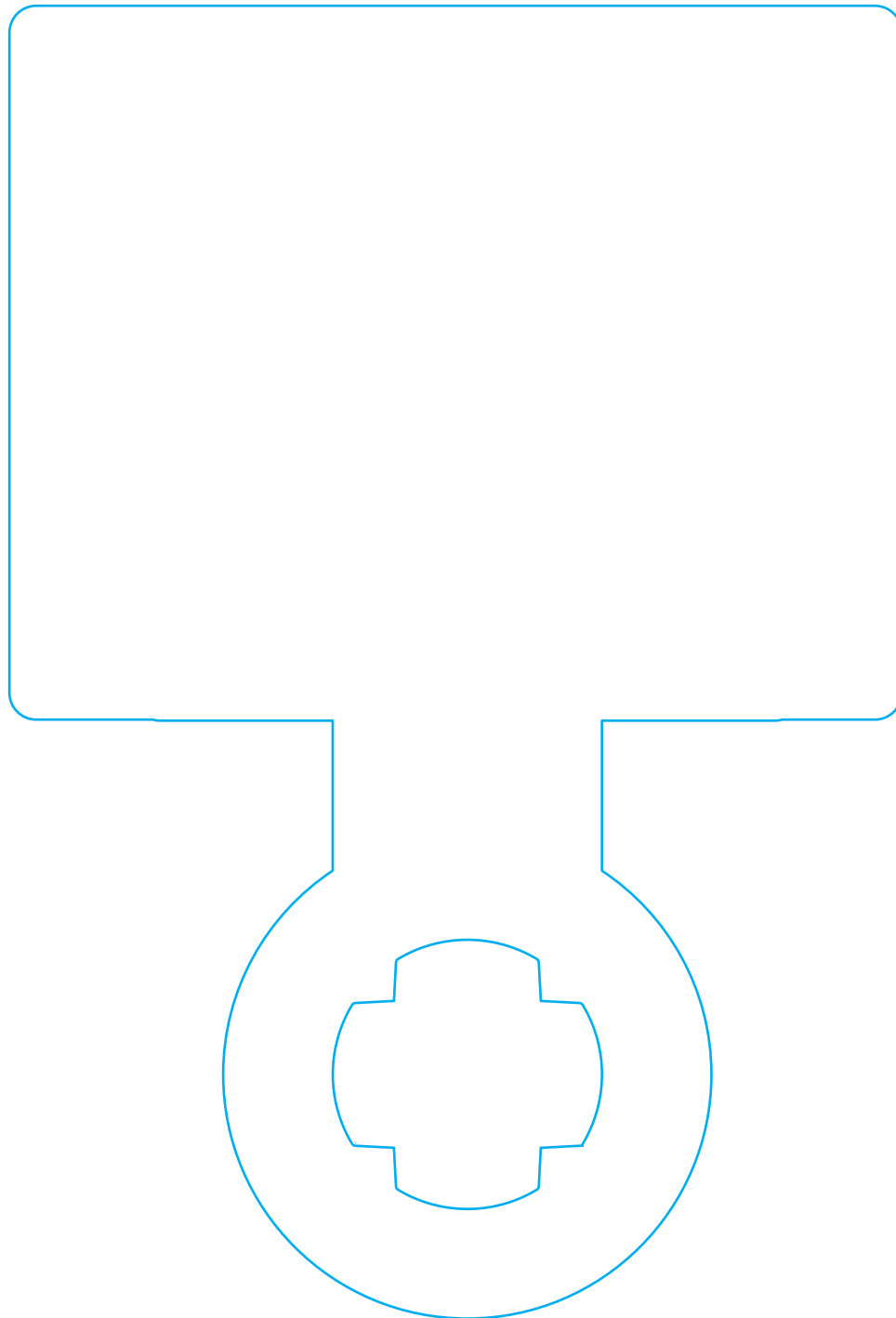
SIGN-FLEXI-LG-1SD  
("Large Flexi Sign" – One-sided print)

SIGN-FLEXI-LG-2SD  
("Large Flexi Sign" – Two-sided print)

20 ml styrene or vinyl

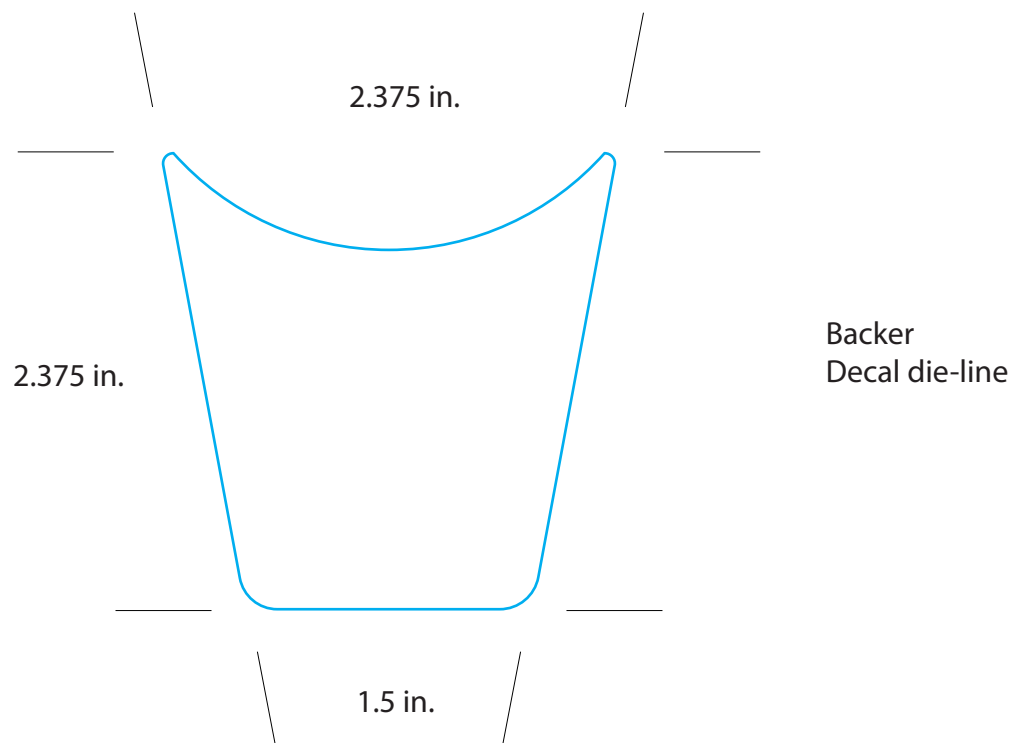
5"

4"



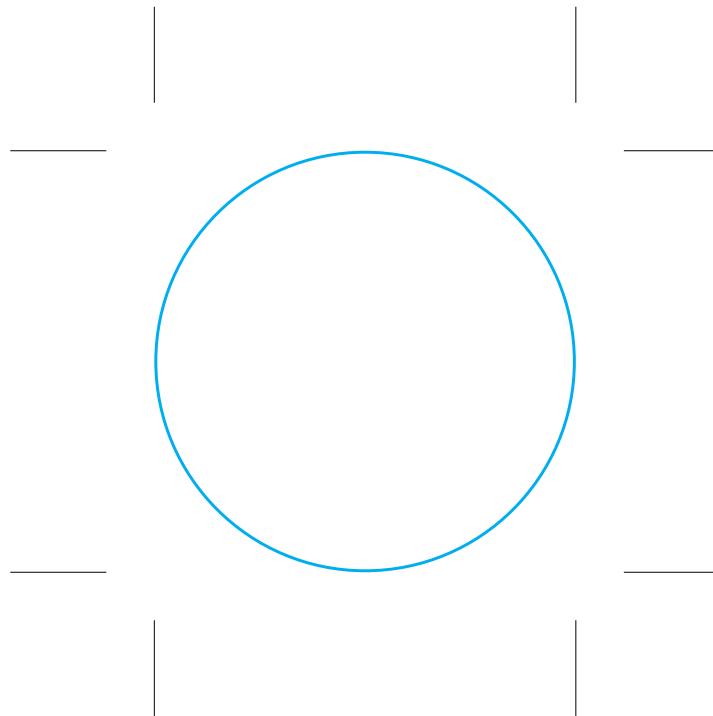
SIGN-DECAL-K2BACK  
("Backer Decal" – One-sided print)

Clear or White Low Tack Adhesive Pressure Sensitive Vinyl



SIGN-KNOB-DISC-LG  
("Knob Insert" – One-sided print)

KNOB INSERT – 10 ml styrene or vinyl



Suction Cup Knob  
Insert die-line

2.18" dia.